

PORTFOLIO

STEFAN PARONIKYAN

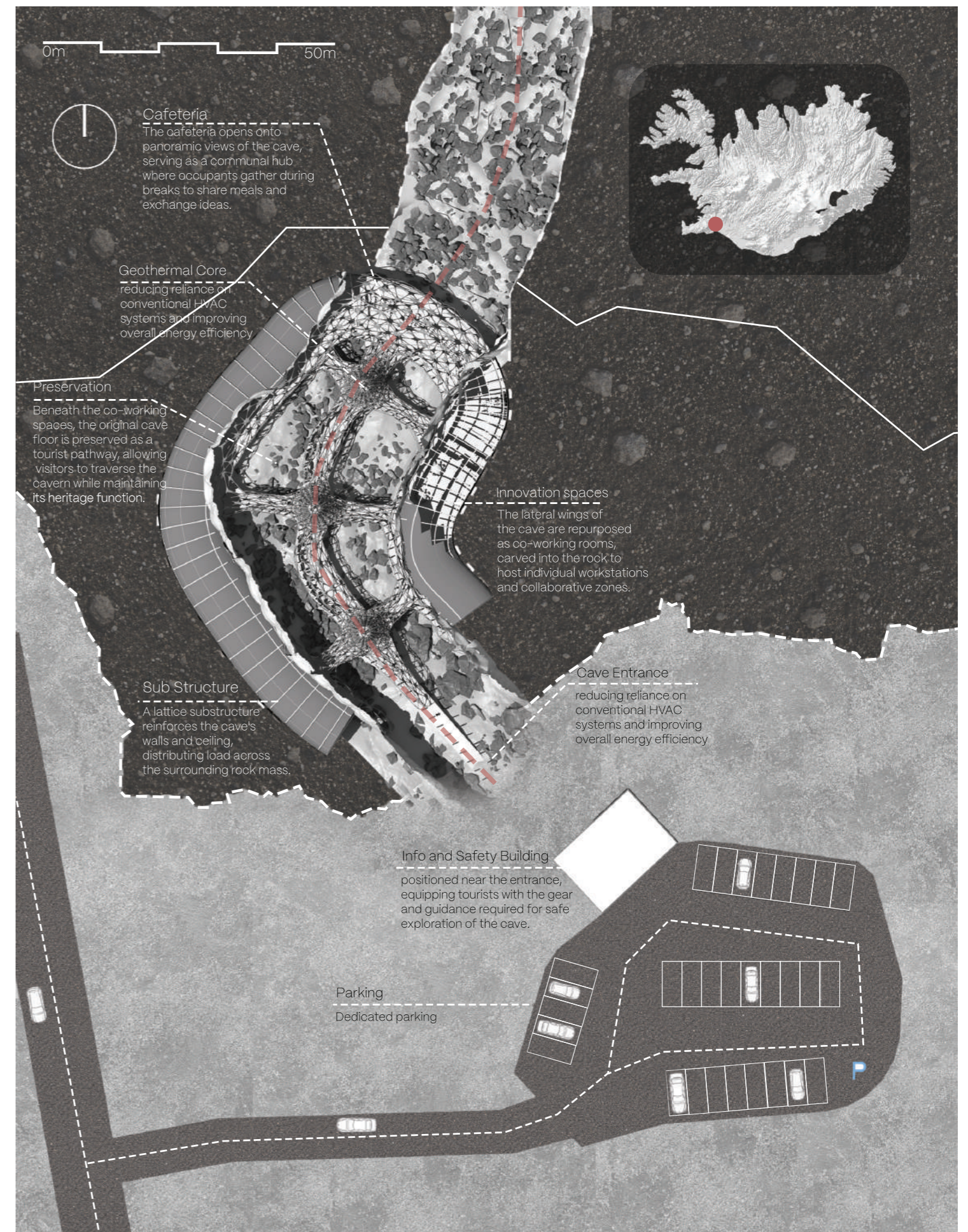
Architecture BArch (Birmingham School of Architecture)



1. SAGA Centre
Jul-Aug 2025
page 2-5
Competition
2. "Continuum"
Jan-Jun 2025
Page 6-9
ARC6117
3. Intergenerational living
Jan-Jul 2024
Page 10-11
ARC5047
4. Tectonics - Forvik Ferry Terminal
Jan-Jun 2025
page 12
ARC6117
5. Work experience - The Capitol
Jan-Jun 2024
page 18-21
Work experience
6. Part 1 - The EAS School
Jan-Feb 2026
page 18-21
Part 1
7. Part 1 - Duruja 15D and 16D
Dec-March 2026
page 18-21
Part 1

1 S A G A Centre

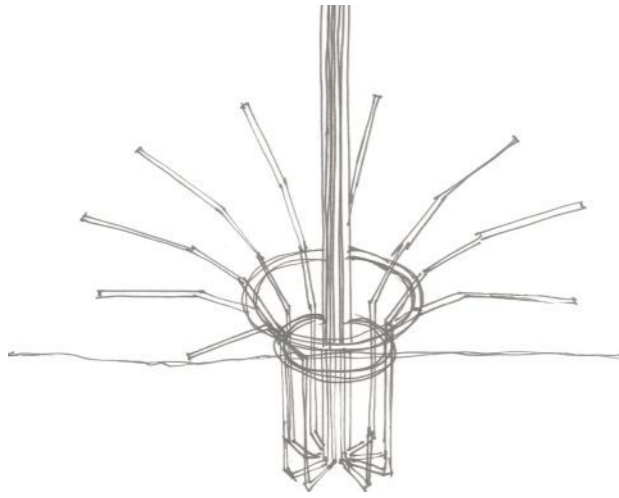
Nestled deep in the basalt of Hveragerði's lava ridge, the S A G A Centre re-forges Iceland's traditional longhouses for the twenty-first century. A single, linear long-house is quarried into living rock; above its geothermal "hearth-bridge" three timber-clad knowledge pods hover like glowing embers, each fed by one of the site's 120 °C production wells. Heat becomes architecture: the radiant trench lures coders, growers and storytellers from every corner of the plan to trade ideas, bake rye bread in sand ovens and author the next chapter of Icelandic innovation.



Site plan

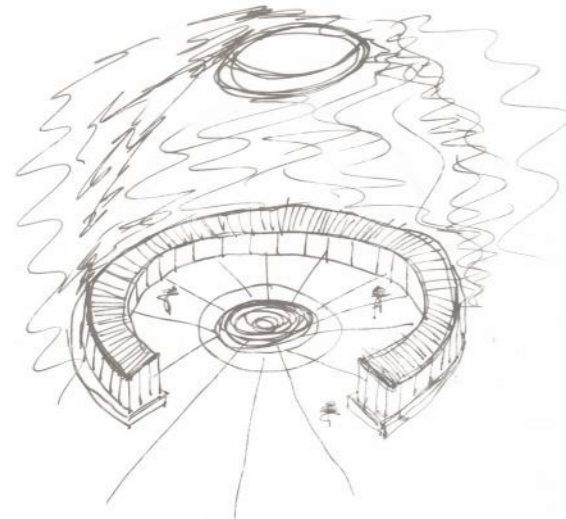
Form-finding & structural development

Hand and computational studies that drove the canopy geometry and structural strategy.



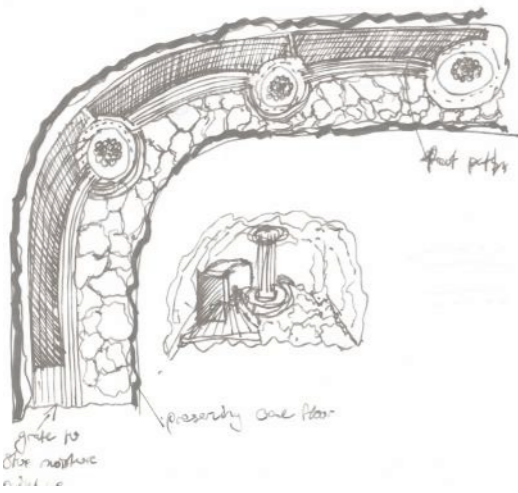
Geothermal Core

Sketching how the geothermal extraction might work as an architectural element rather than hidden plant. A central shaft draws heat from the basalt aquifer; radial arms spread outward at ground level, hinting at how a single core could feed both the hub above and a wider district network. At this stage I was testing whether three of these, set along the cave, could plausibly carry the building's energy story.



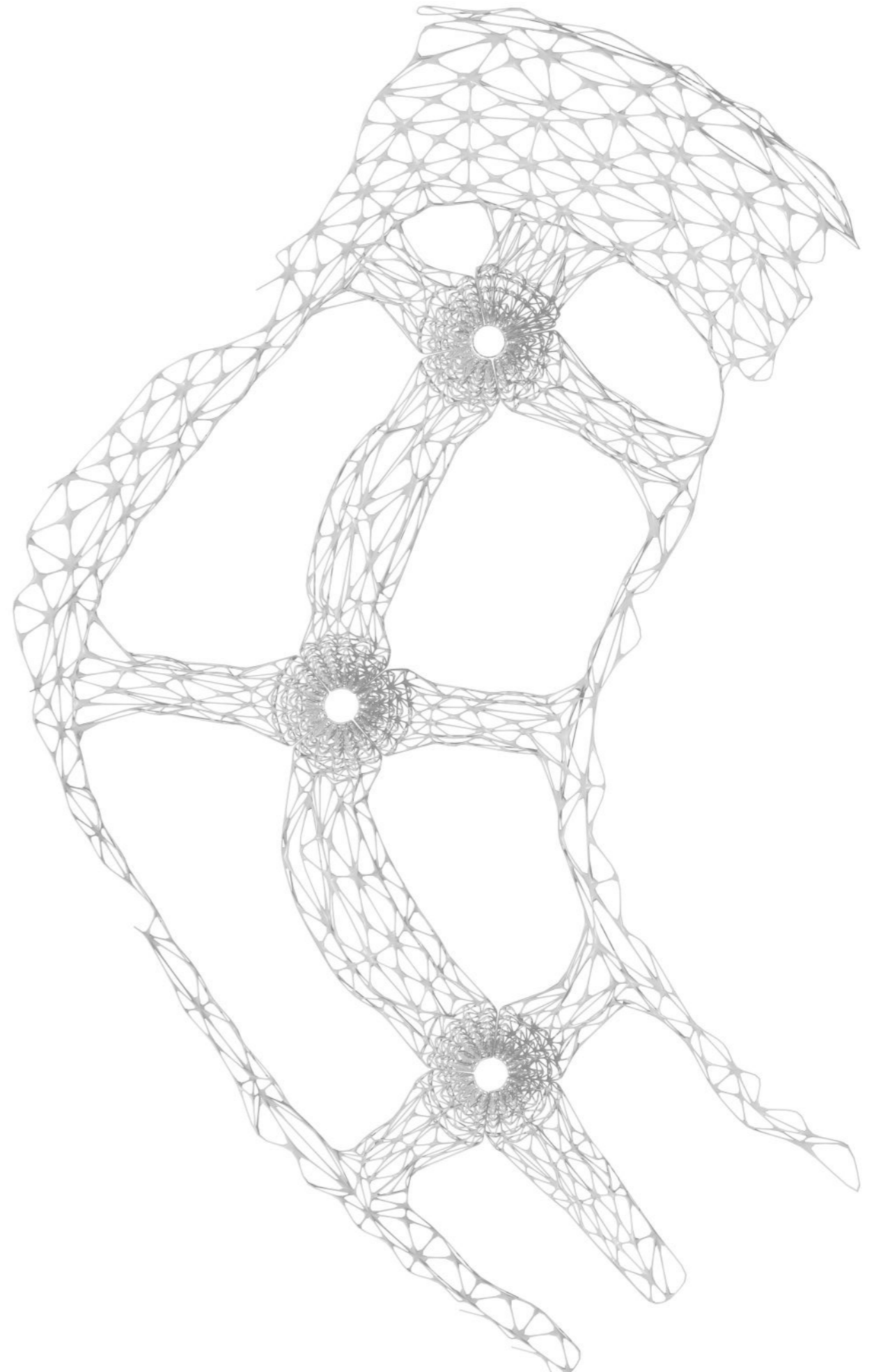
Community Circles Around Cores

Sketching how the geothermal cores might double as social anchors. Each core becomes the centre of a sunken circular space, ringed by stepped seating and lit from a skylight above. The thinking borrows from the Icelandic longhouse hearth: a single source of heat that organises everything around it. Three cores along the cave would generate three of these rooms, each its own small community.

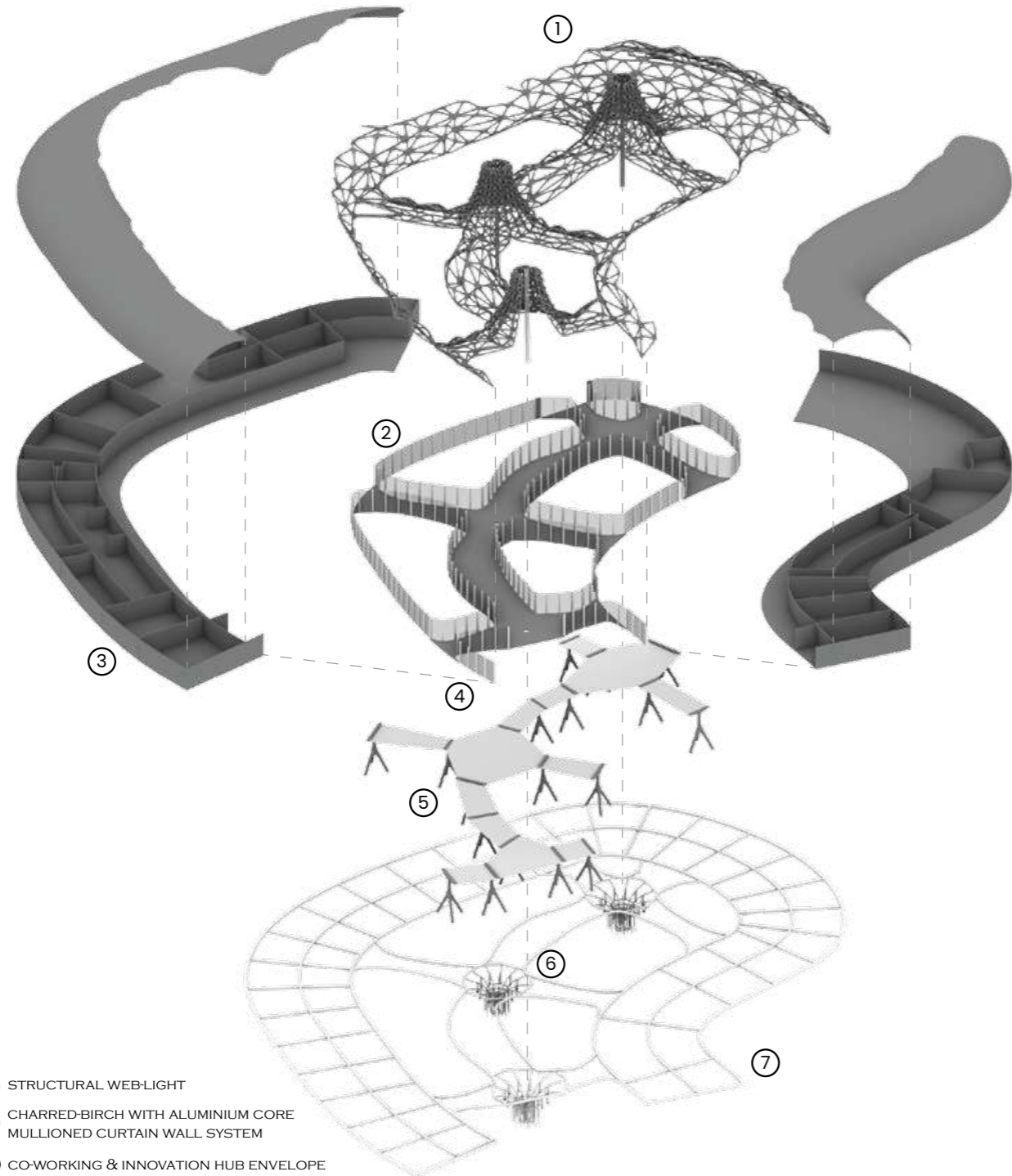


General Layout

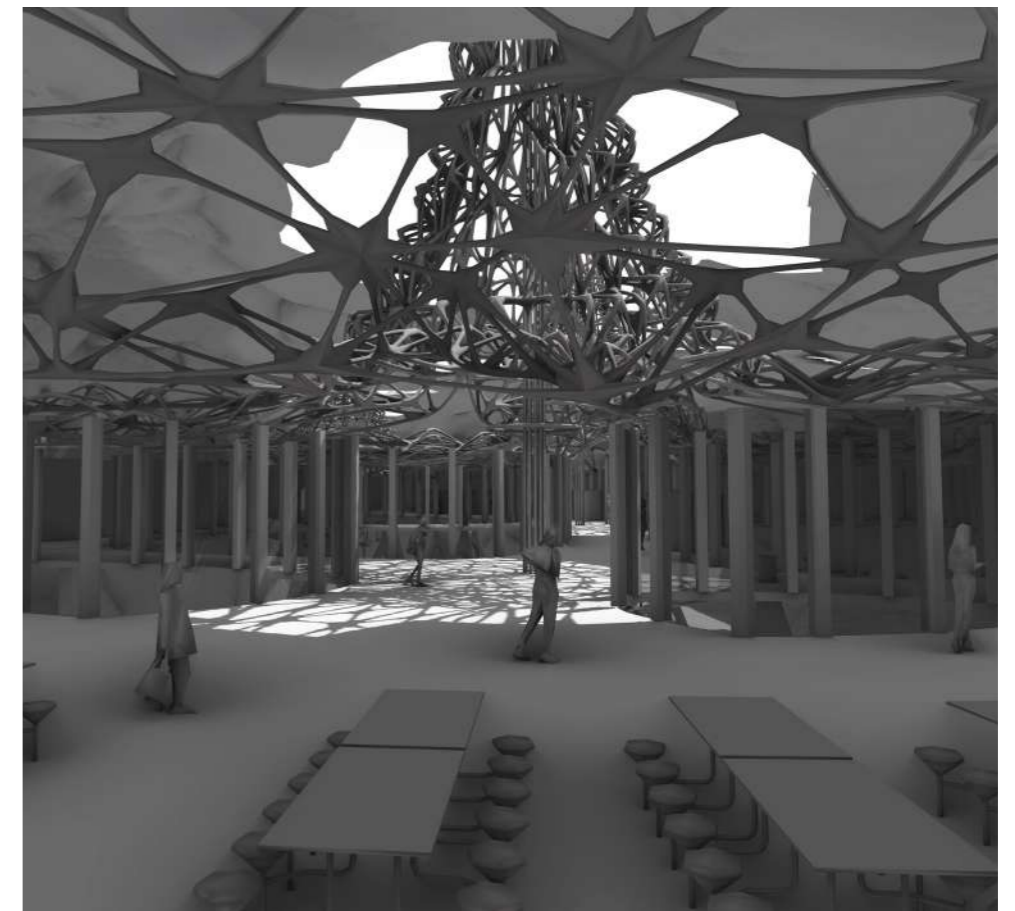
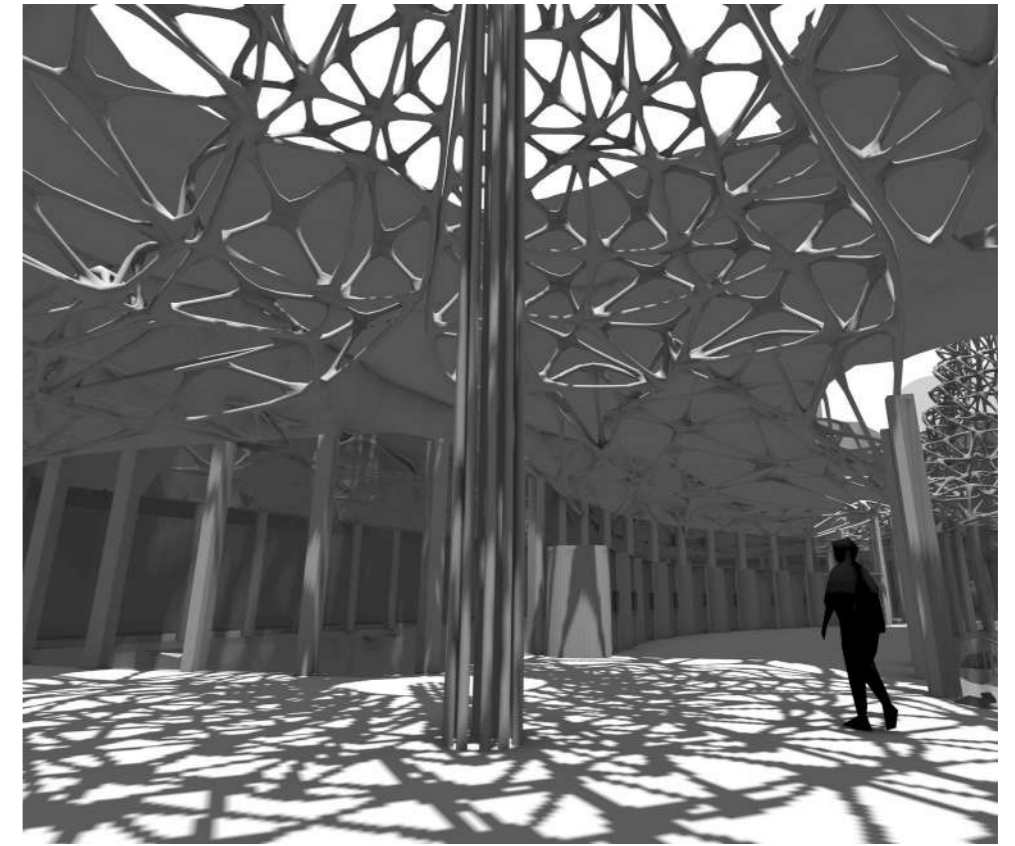
Working out how the three cores might sit along the length of the cave rather than stand free. The section sketch tests a layered edge condition: rough basalt at the back, a band of rubble fill, a grated channel for moisture and run-off, and a finished walkway above with the cores reading as rounded interruptions in that strata. Below, a small interior view asks what one of these touchdown points feels like at human scale, with the preserved cave floor left

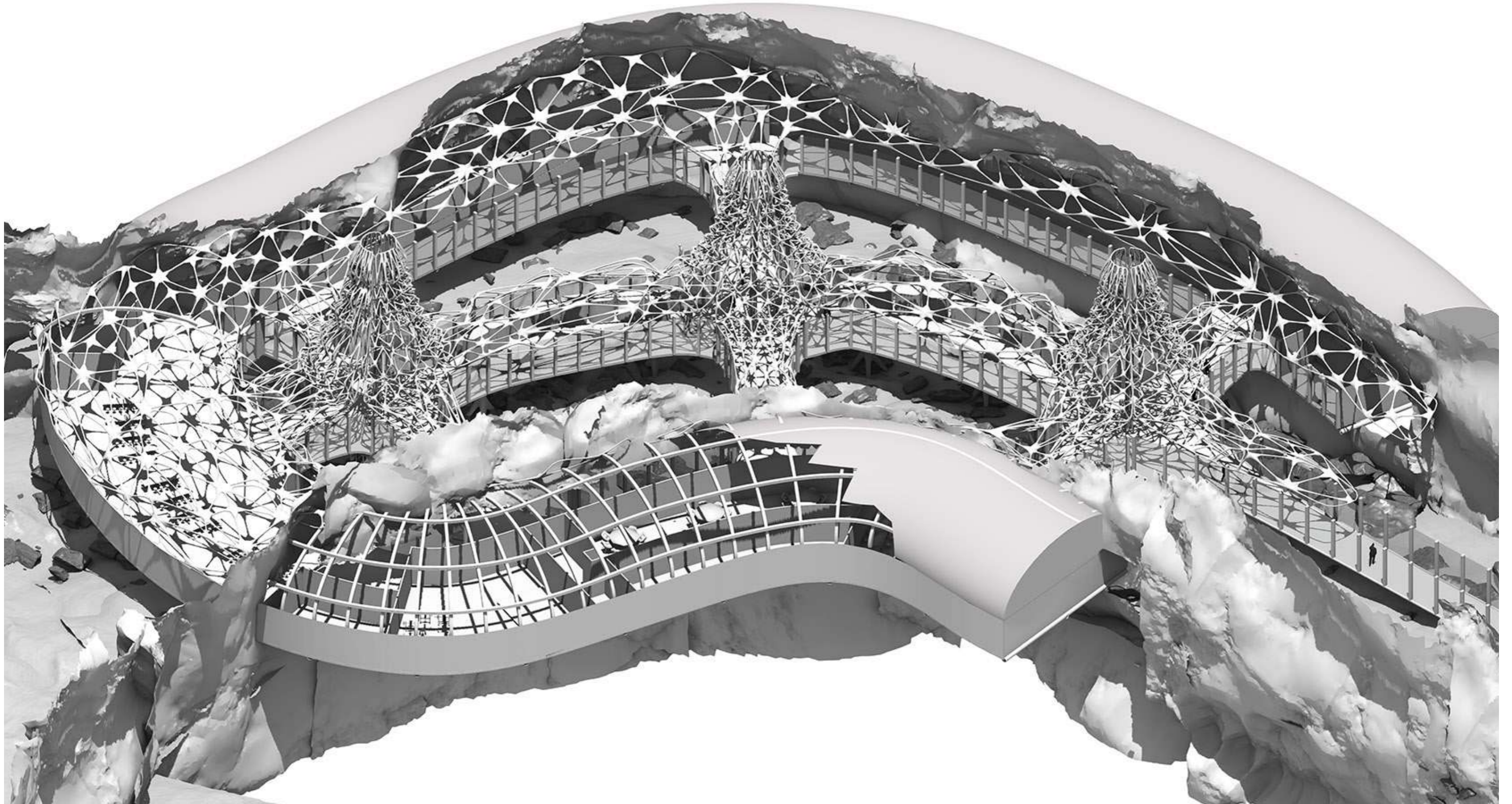


Exploded AXO



- ① STRUCTURAL WEB-LIGHT
- ② CHARRED-BIRCH WITH ALUMINIUM CORE
MULLIONED CURTAIN WALL SYSTEM
- ③ CO-WORKING & INNOVATION HUB ENVELOPE
- ④ CIRCULATORY FLY-OVER BRIDGE
- ⑤ VOLCANIC BASALT SUPPORTING LEGS
- ⑥ GEOTHERMAL PLANT CORES
- ⑦ INTEGRATED ANCILLARY SUPPORT
INFRASTRUCTURE (MEP ETC)







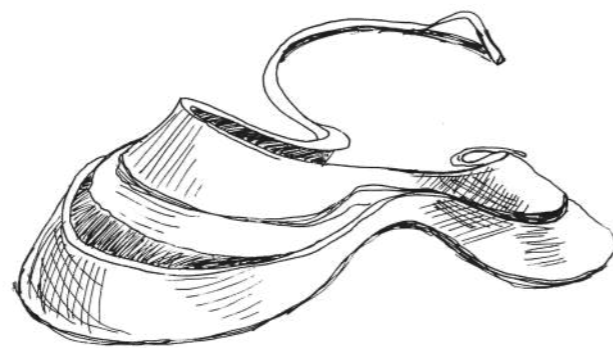
Acoustic Strategy

“Continuum”

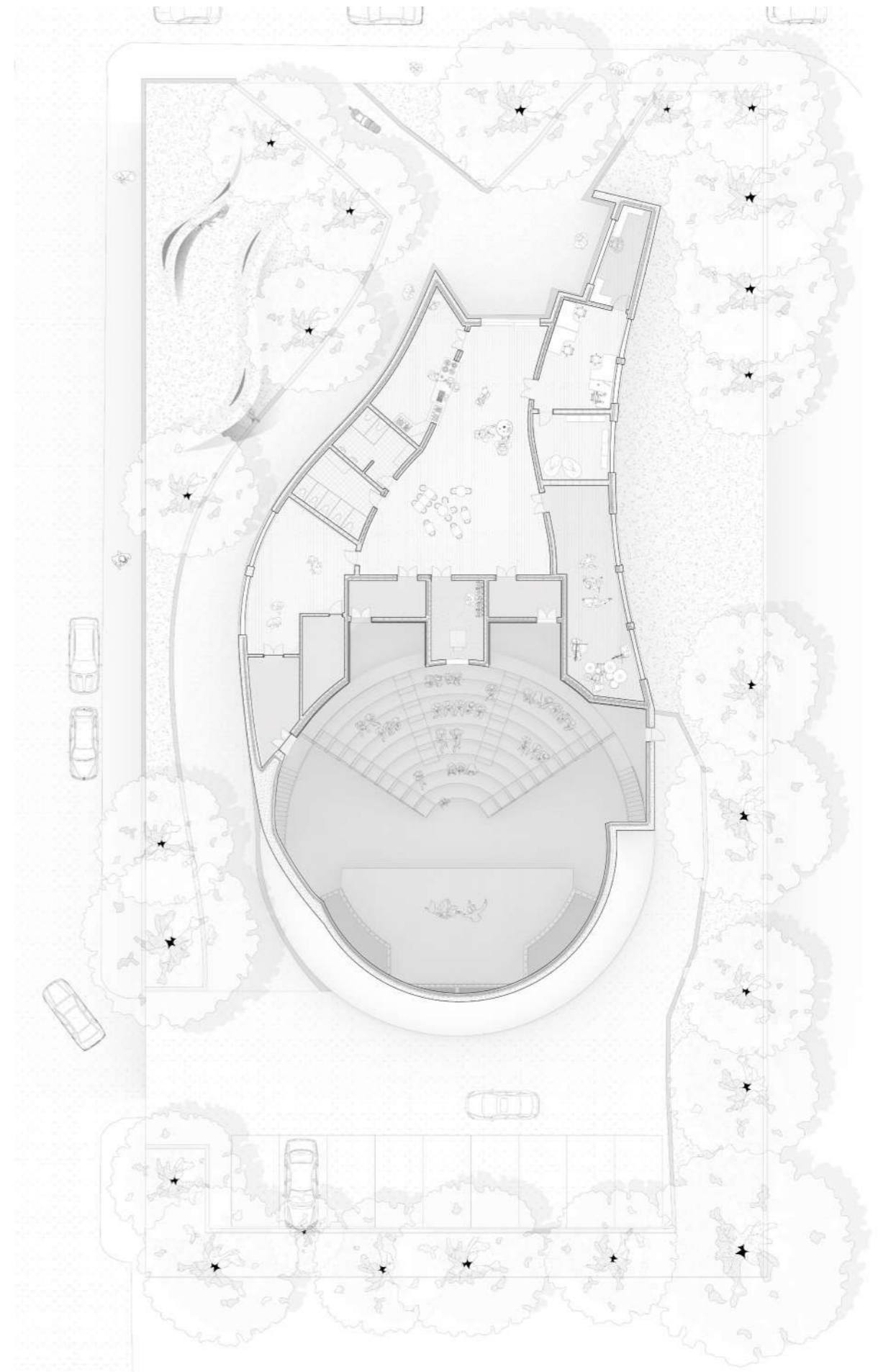
The Continuum aims to revive the dying entertainment scene in Stirchley with a community hub that draws people off the traffic choked main road and into a shared space for film and theatre.

Continuity is represented in the architecture through fluid forms which gives it a bold presence in the area, an indoor/outdoor cafe with an embedded seating area inspired by the local park terrain seating is incorporated to help the community welcome and accept the building.

The indoor cafe seating is lit up with a parametric light installation, taking inspiration from the Harbin opera house in China by MAD architects.



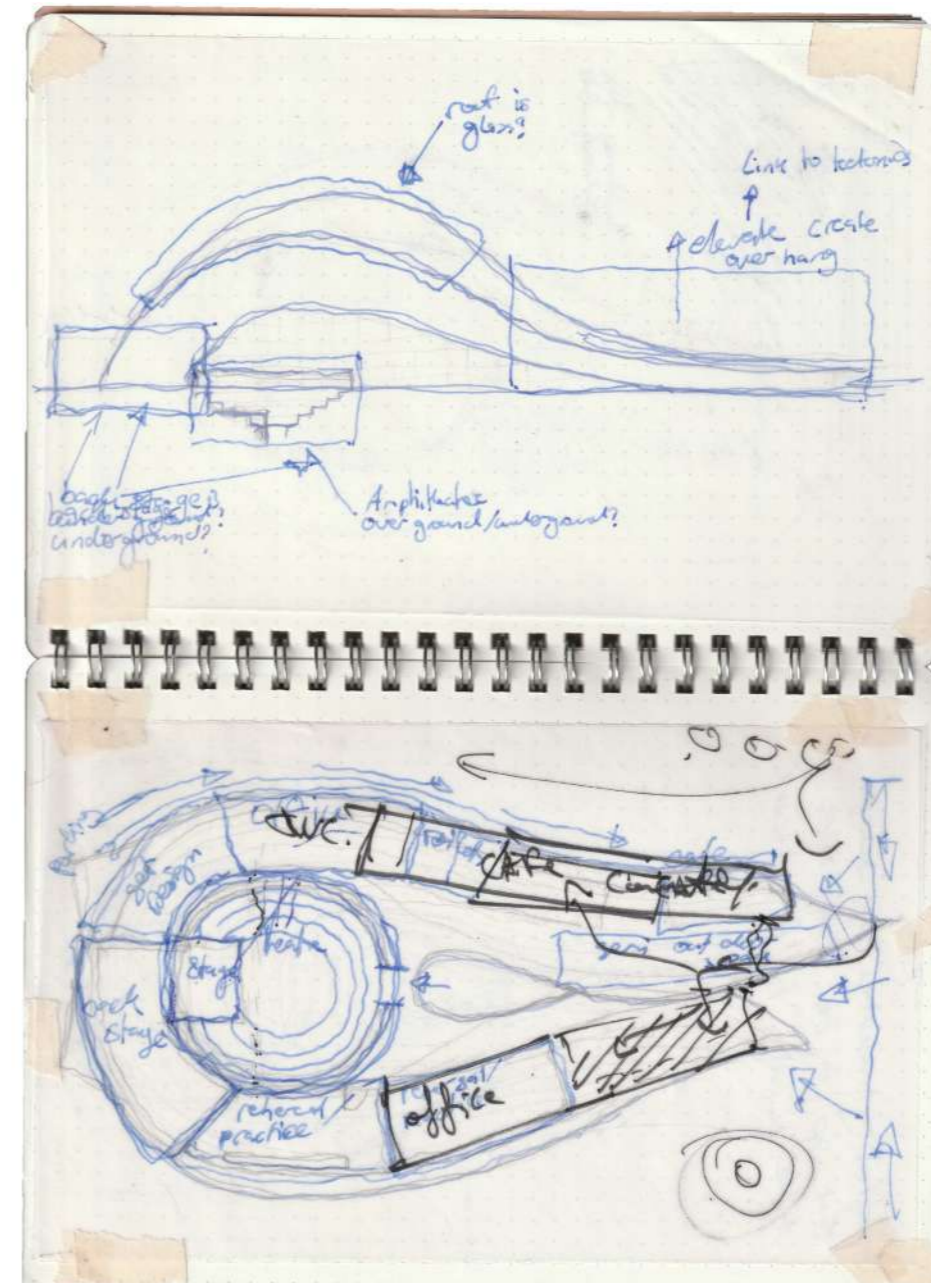
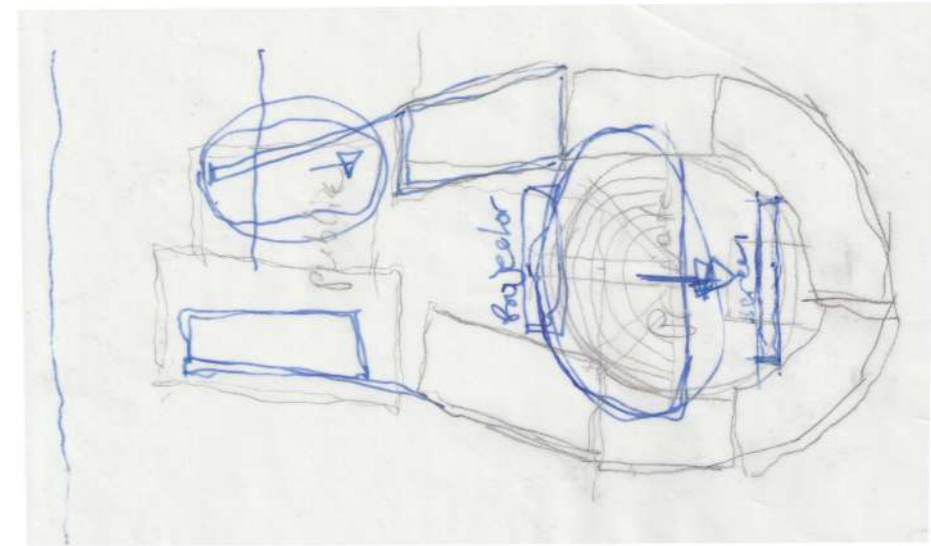
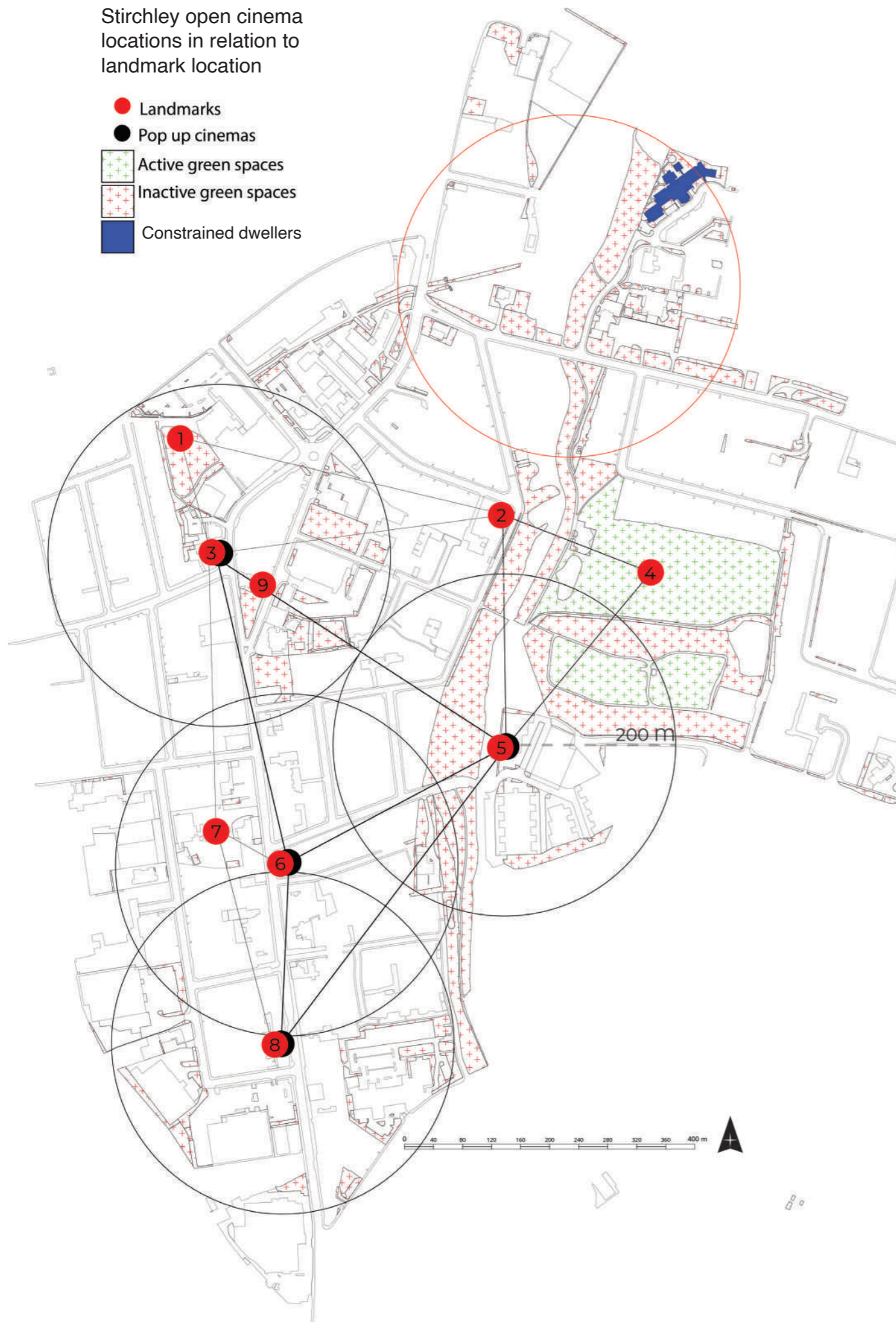
Harbin Opera House sketch



Siteplan

Stirchley open cinema locations in relation to landmark location

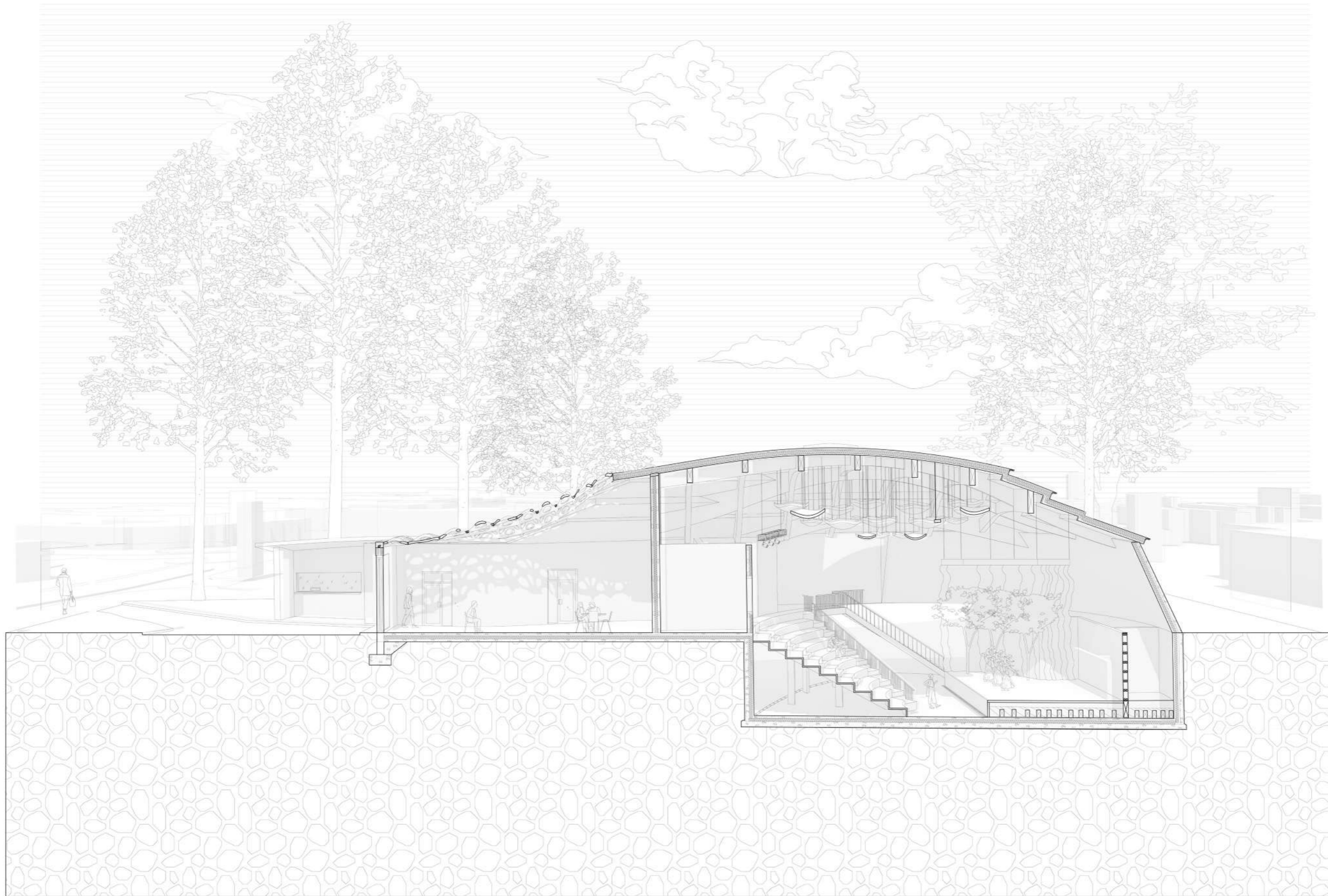
- Landmarks
- Pop up cinemas
- Active green spaces
- Inactive green spaces
- Constrained dwellers



Concept Sketches



Rendered interior of Amphitheatre



Perspective Section



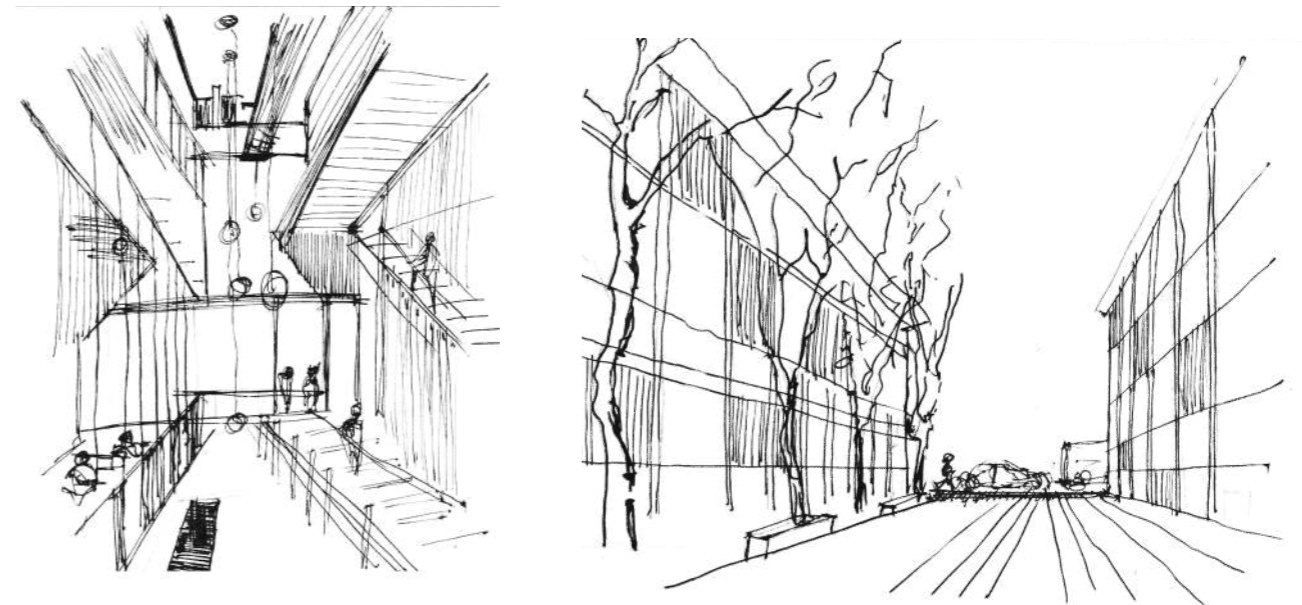
Section Elevation

3

Intergenerational living

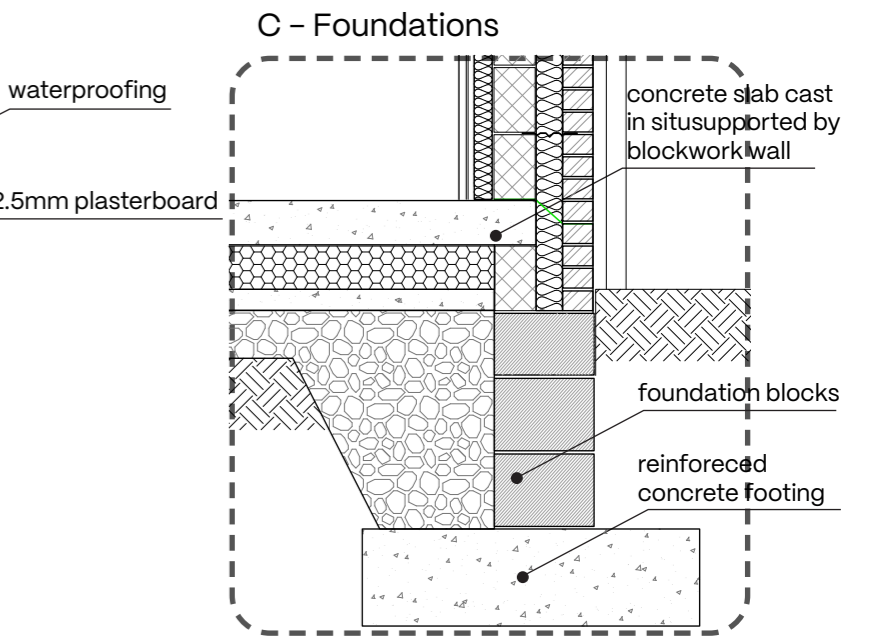
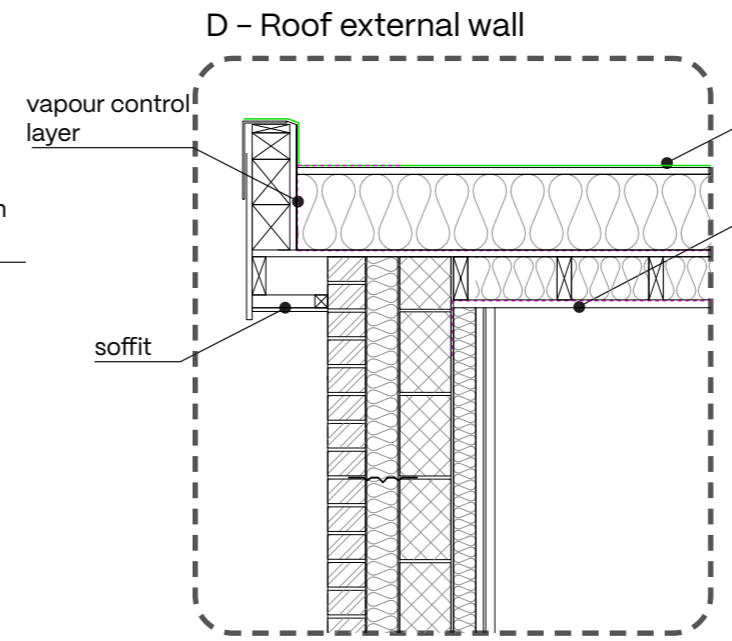
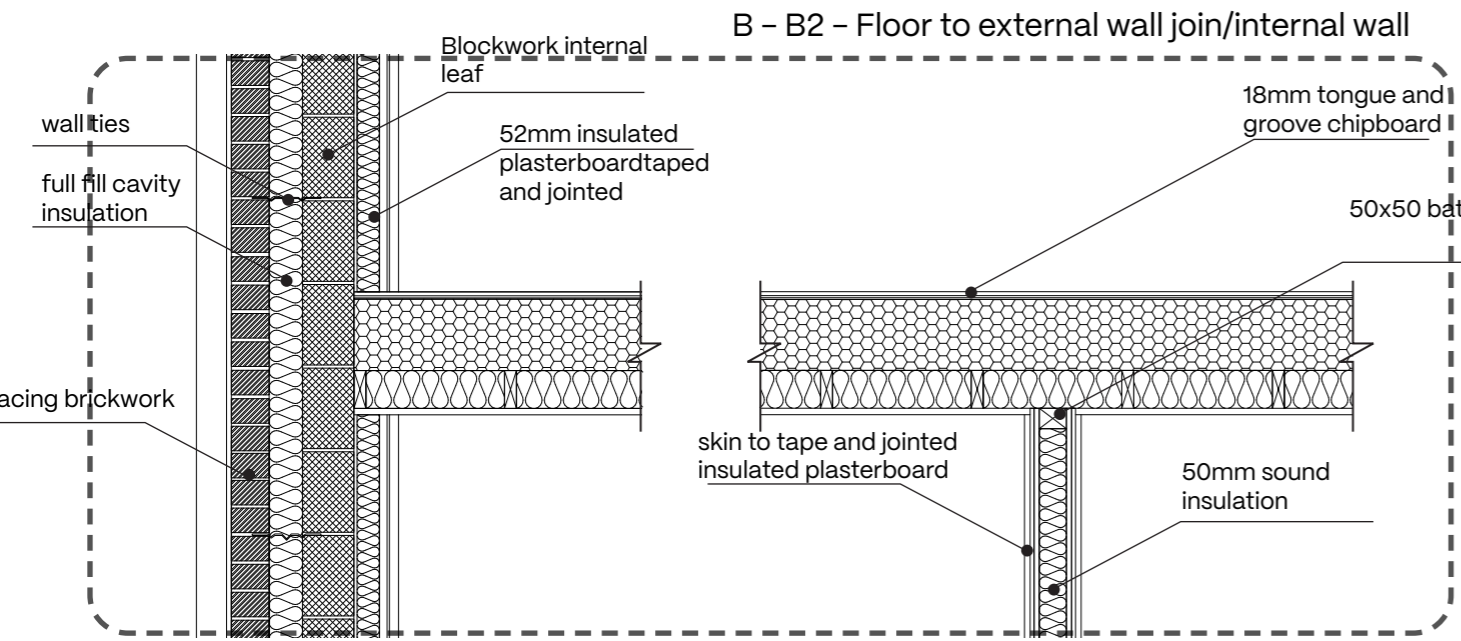
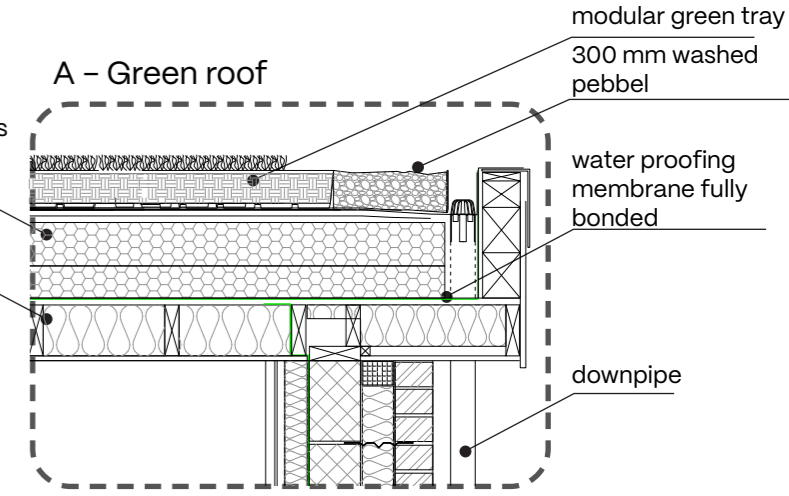
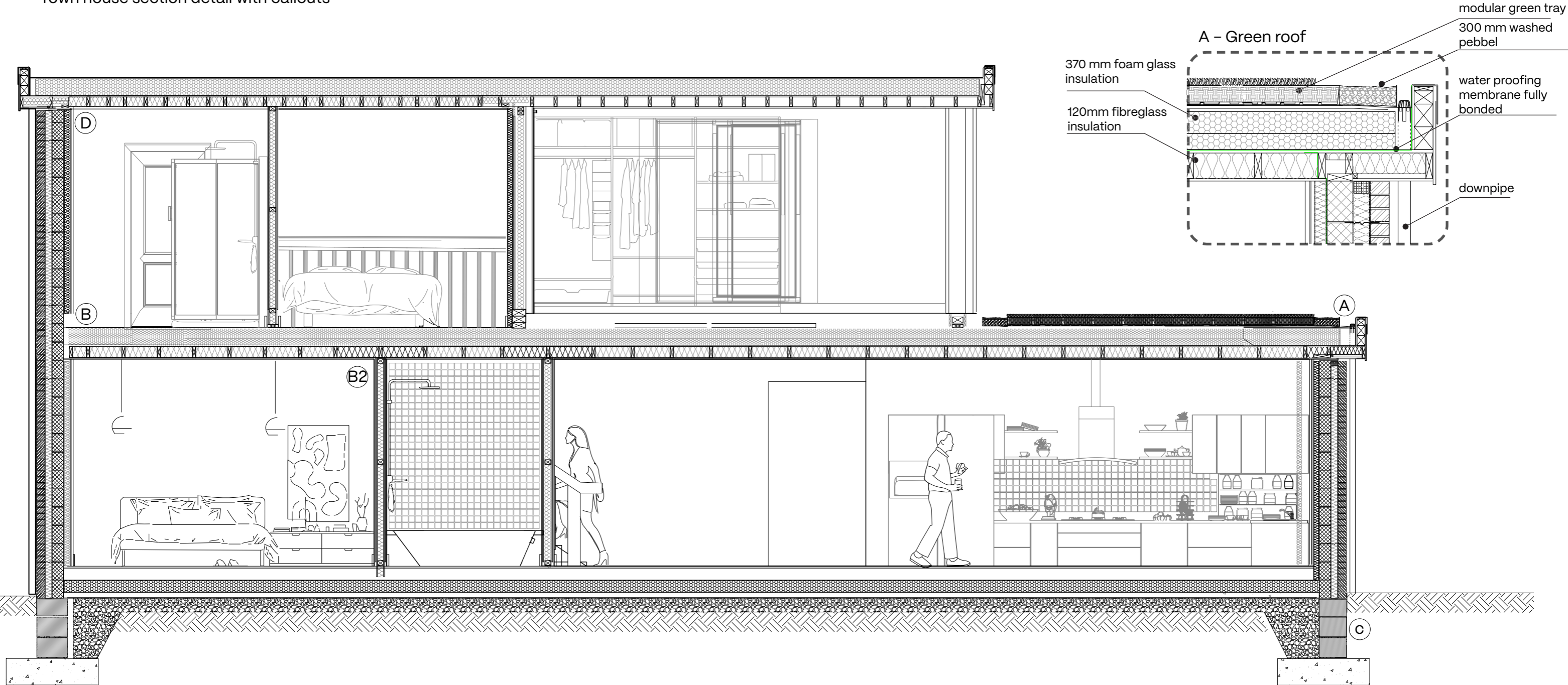
Introducing a housing scheme that pairs the elderly battling loneliness with university students priced out of accommodation, fostering mutual support, affordable living and a vibrant community life.

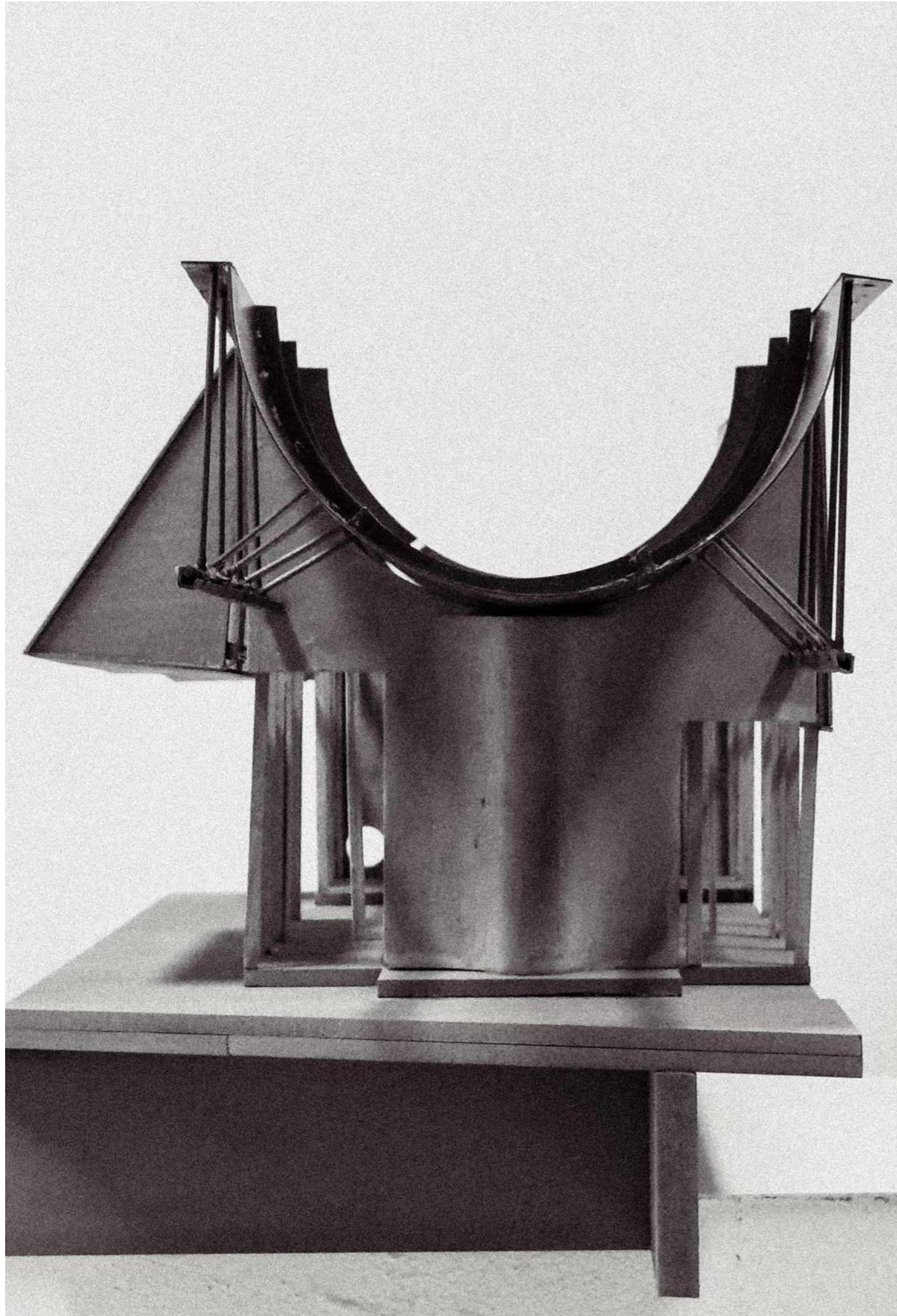
Centred to the housing is a community garden that features a waffled canopy populated with local species of butterflies and plants, which represents the project's environmental goals of habitat creation, flood defence and cooling with its social ambition of intergenerational interaction and well-being.



Concept Sketches

Town house section detail with callouts





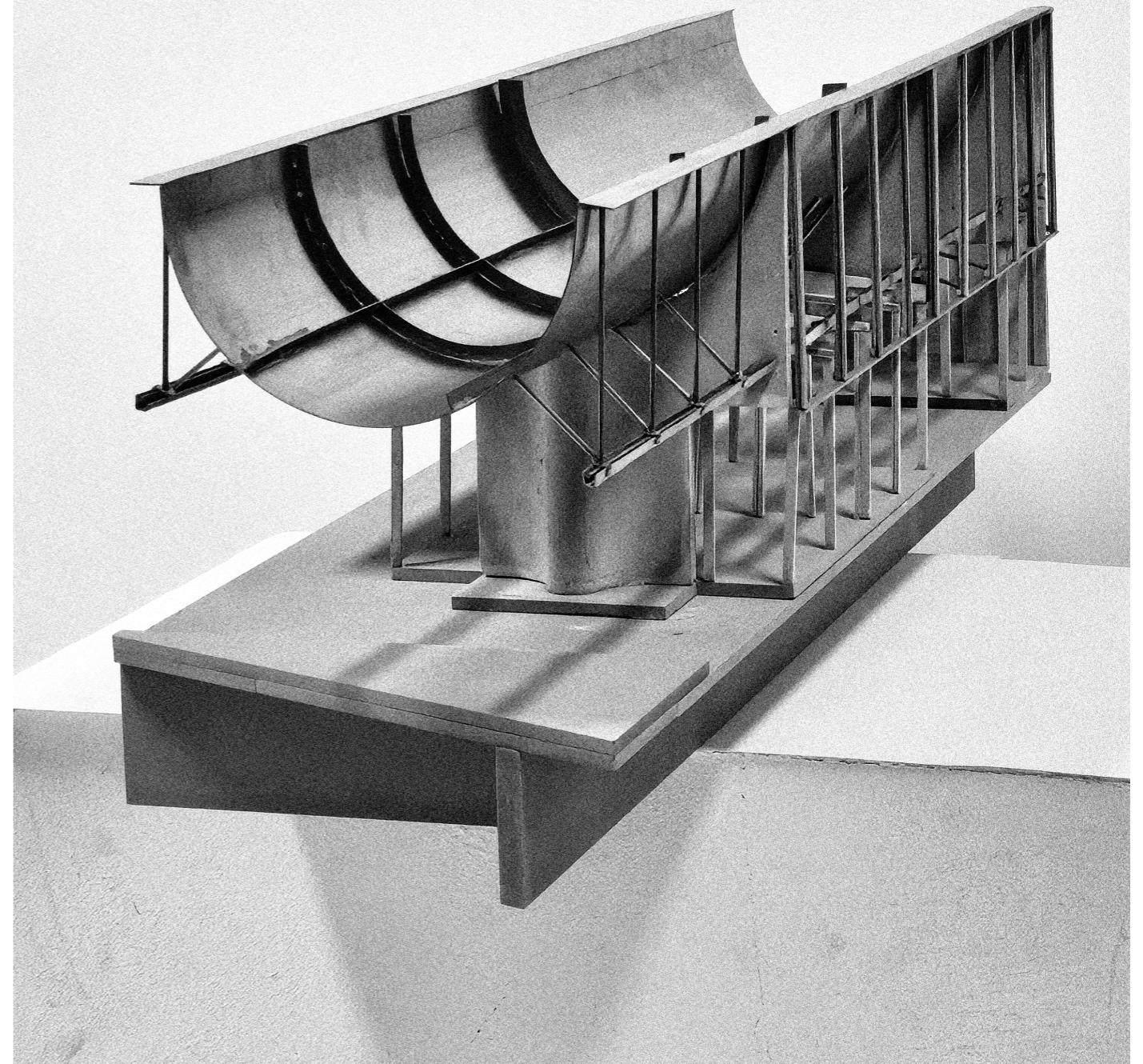
4

Tectonics – Forvik Ferry Terminal

Model of: Manthey Kula's, 2015 Forvik Ferry Terminal on Norway's Helgelandskysten

Two in-situ concrete gable walls support the inverted vault made of galvanised steel, canter levering towards the quay, farming uninterrupted fjord views while shielding waiting passengers.

Rotation is prevented with steel rods welded to the roof and the metal structure is strengthened with ribs



5

Work experience – The Capitol

The Capitol, a theatre located in Horsham, was in need of a renovation to its facade. I was tasked with designing a screen that would let the existing brick facade shine through and be visible from the street. Experimenting with parametric forms and different offsets.



6

The EAS School

The EAS School (European Azerbaijan School), located in West Baku, required a façade redesign. The client's brief called for a new external skin that could be installed over the existing façade. In response, we explored tiled parametric patterns and researched materials that would be suitable for the structure, as the existing walls were relatively weak and originally designed only to support a rendered finish rather than a heavy cladding system.



Elevations



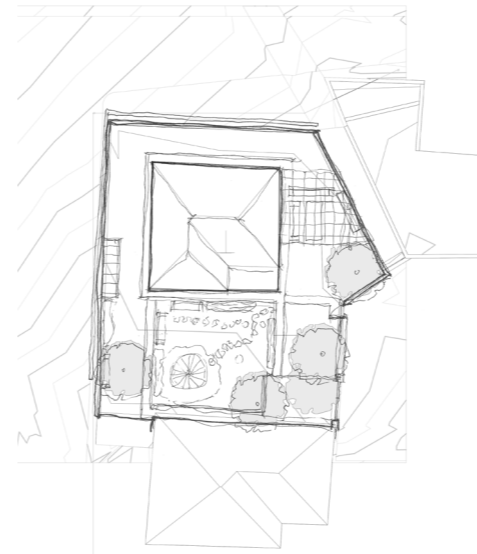
Perspective Elevations

7

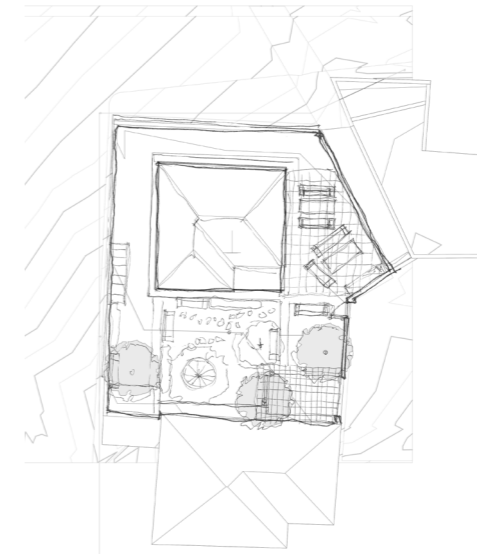
Duruja 15D and 16D

This project located in northern Azerbaijan is a redevelopment of a village called Duruja, i was tasked with creating bronze silver and gold options for accommodation to give the client flexibility of cost and specifications. I also contributed in the design and development of a tea house that sits adjacent to the accommodation and we classed it as a double plot.

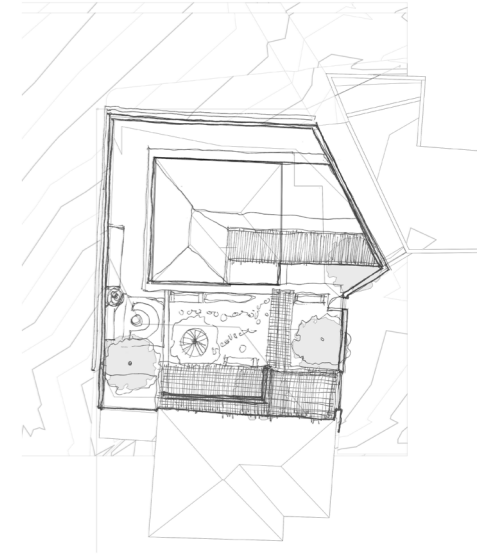
These renders show the proposed accommodation and tea house. The main design intent was to preserve as much of the panoramic view as possible, given their position on the hillside, while using stone cladding to anchor the buildings within the landscape.



BRONZE



SILVER



GOLD

